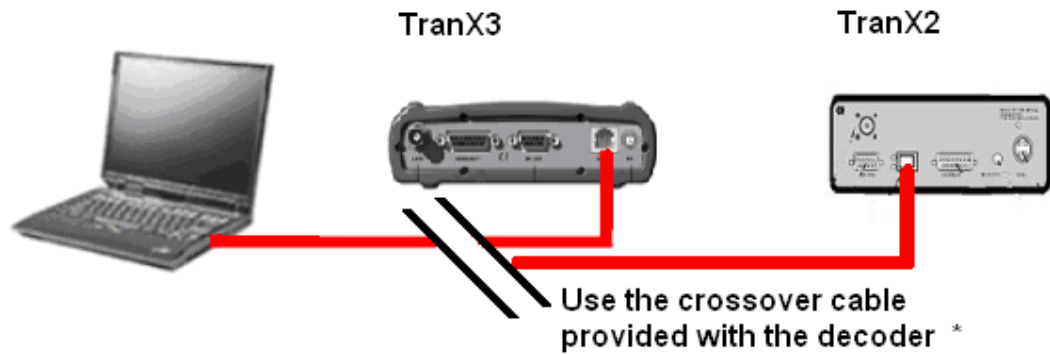




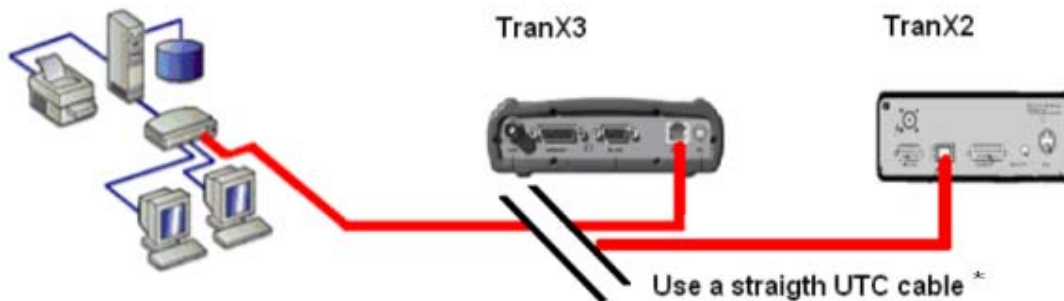
CONNECT THE NETWORK PORT OF AN MYLAPS DECODER

1) TO A SINGLE COMPUTER/LAPTOP



*See Network cables details

2) TO A TCP/IP NETWORK

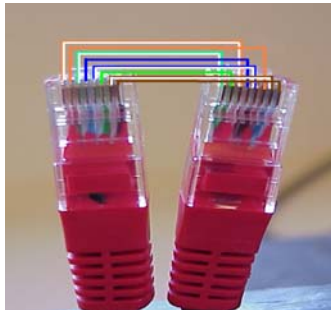


*See Network cables details

NETWORK CABLES DETAILS

Crossover cable

Colour sequence is different
(first left goes to third left)



Straight UTC cable

Same colour sequence
(First left goes to first left, second to second, and so on)

