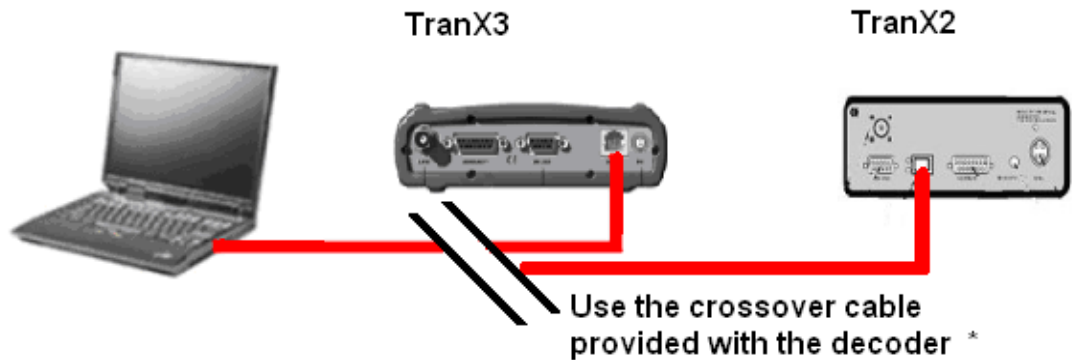


How to use the MYLAPS decoder network port:

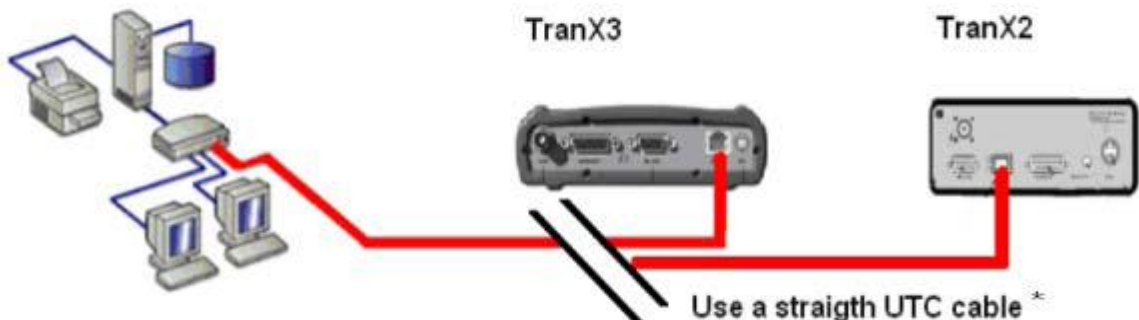


There are 2 options to use the decoder network port:

1. Connection to a single computer



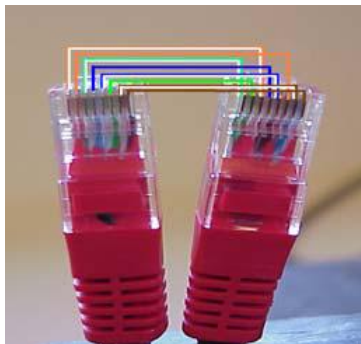
2. Connection to a TCP/IP network



*Network cables details

Crossover cable

Colour sequence is different
(first left goes to third left)



Straight UTC cable

Same colour sequence
(First left goes to first left, second to second, and so on)

