

## TCP/IP NETWORK SETTINGS

### 1) General Guidelines:

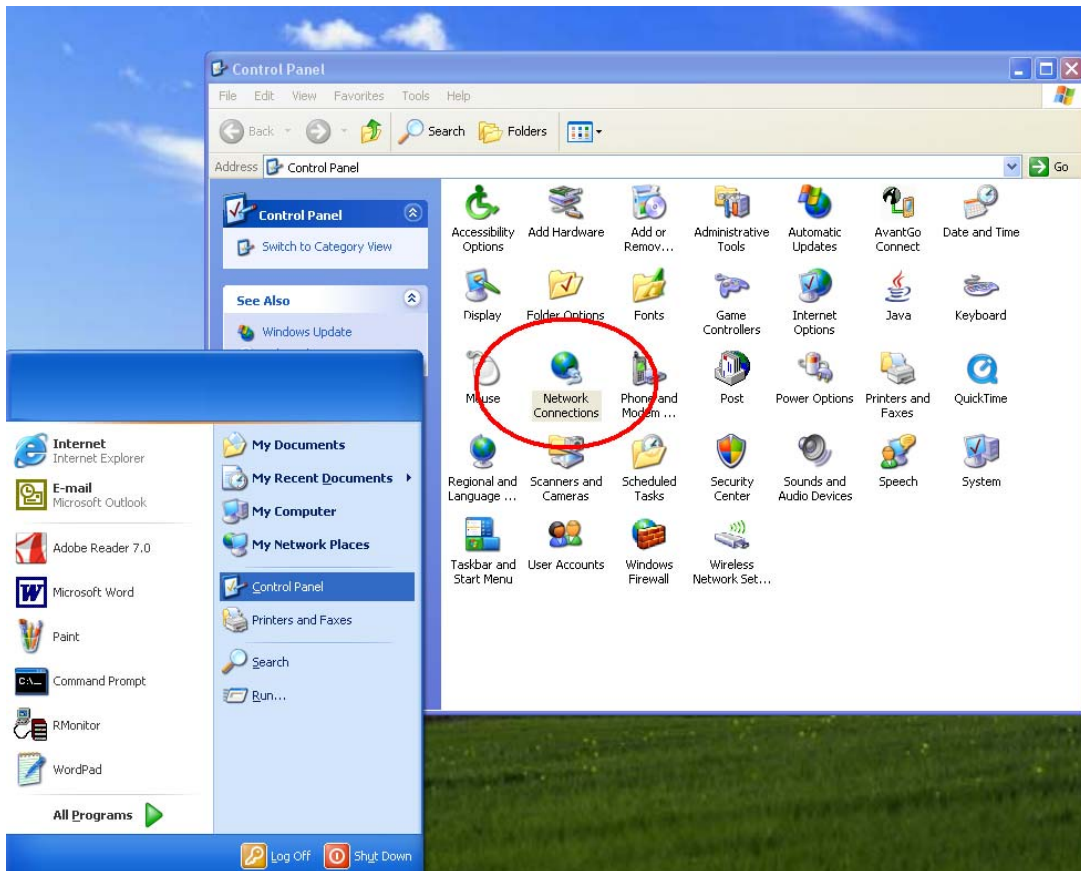
- The IP Address of the timing PC and the decoder should be in the same IP range, which means that only the 3 last digits of the IP Address of the timing PC and the decoder number should differ.
- The value of the last digit is between 0 and 255
- The IP Address of the timing PC and the decoder should not be the same
- The recommended Subnet Mask is 255.255.255.0

For example:

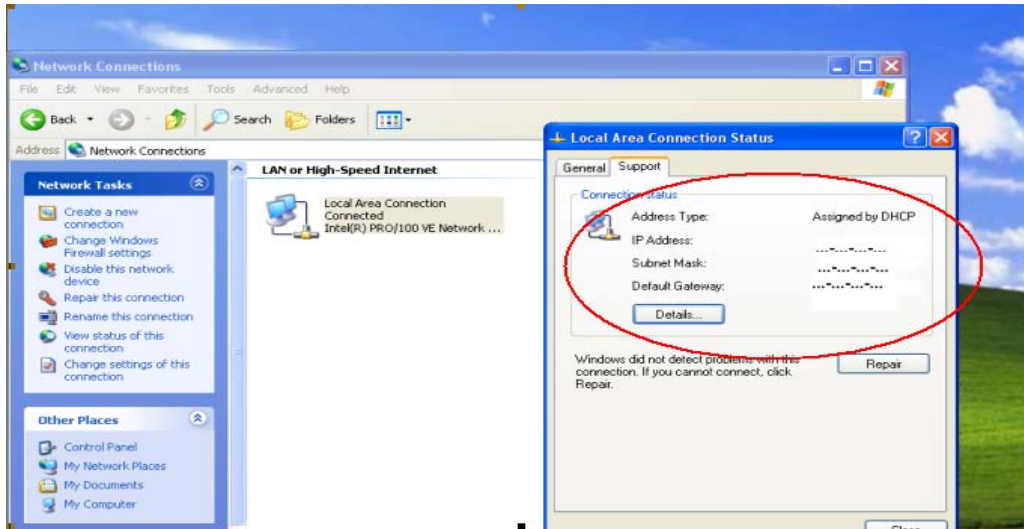
If the timing PC's IP Address is: 192.168.9.0, the IP Address of the decoder start with 192.168.9. and can have the values 192.168.9.1 to 192.168.9.255

### 2) Retrieve the TCP/IP Settings of my computer

Go to the Start menu and select Control Panel, Select Network Connections



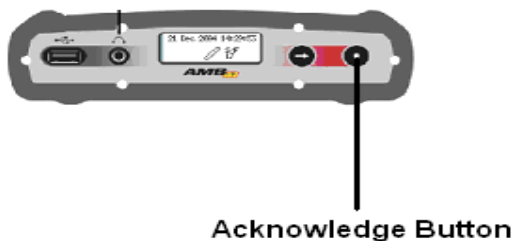
Double-click the Local Area Connection, a dialog Local Area Connection Status will be displayed, go to the Support Tab



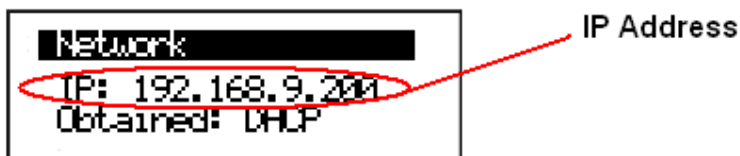
The Support section will display the IP Settings of the timing computer.

### 3) Retrieve the TCP/IP Address of a TranX3 decoder

The TCP/IP Address information can be shown on the decoder's display:



Press the acknowledge button  on the decoder, the display should indicate the Network settings:



### 4) Retrieve the TCP/IP Settings of the TranX2 decoder

The TCP/IP Settings can be retrieved by using the Program Decoder Wizard:

Following steps describe how to have live results automatically uploaded to the data server:

**Step 1:**

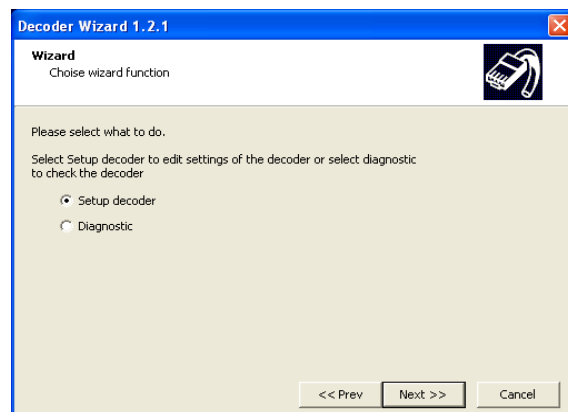
Start the Decoder Wizard: If you don't have this program, you can find it in the download section of the Support website



-Click 'Next'

**Step 2:**

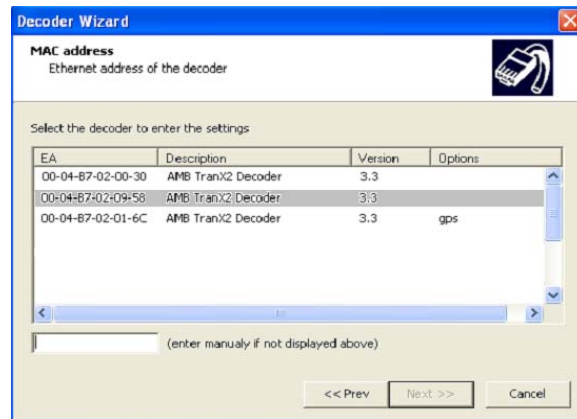
-Select 'Setup decoder'



-Click 'Next'

### **Step 3:**

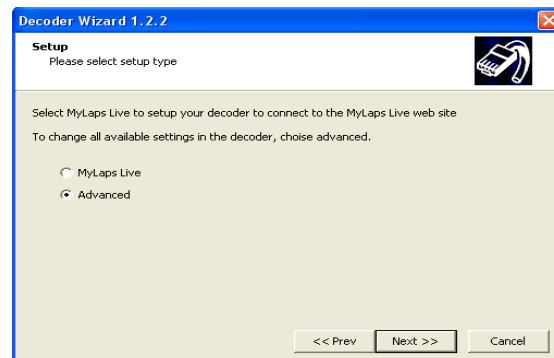
- Select the decoder you want to connect to



- Click 'Next'

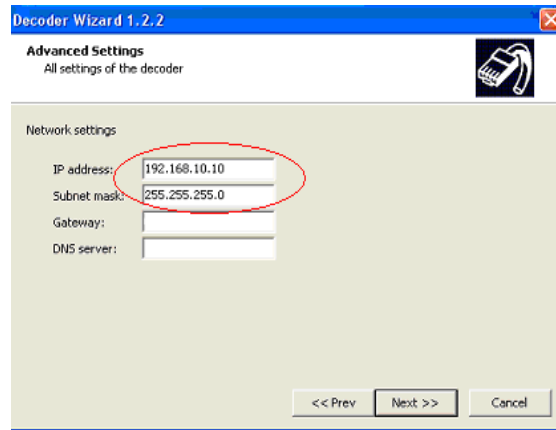
### **Step 4:**

-Select 'Advanced'



-Click 'Next'

The TCP/IP Settings of the decoder will appear



## 5) Changing the TCP/IP Settings:

Changing the TCP/IP Settings of a computer can have severe consequences, specially if the computer is part of a Computer Network, or if the computer connects to the Internet!!

If the IP Address of the timing computer and the decoder are not in the same IP range, we recommend to change the TCP/IP settings of the decoder.

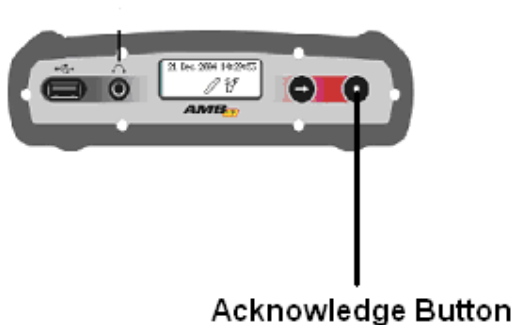
### 5.1) Changing the TCP/IP Settings of the TranX3 decoder

MYLAPS recommends to have TCP/IP Settings of the TranX3 decoder set to "Automatic".

The settings will be optimized, and in 99% of the cases, it won't be necessary to change the TCP/IP Settings of the decoder.

To check if the settings are set to automatic:

-Press the Acknowledge Button 1 time



The display will show the Network settings of the decoder:

If the settings are set to automatic and the decoder is connected to a TCP/IP Network with a DHCP server, Obtained will say DHCP



If the settings are set to automatic and the decoder is directly connected to the timing computer, Obtained will say APIPA

## 5.2) Changing the TCP/IP Settings of the TranX2 decoder

The TCP/IP Settings of the TranX2 decoder can be changed in the Advanced Settings in the program Decoder Wizard

### Step 1:

Start the Decoder Wizard:



-Press 'Next'

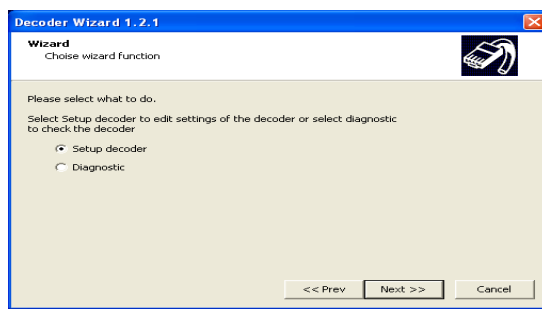
### Step 2:

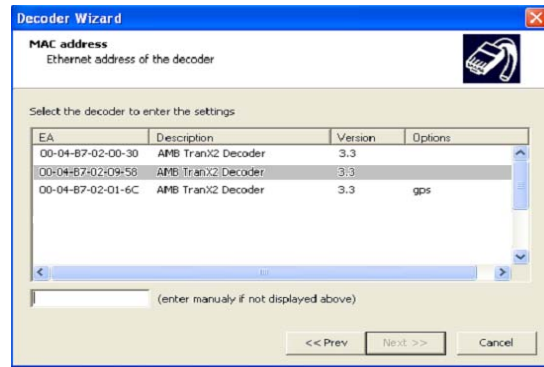
Select 'Setup decoder'

-Press 'Next'

### Step 3:

Select the decoder you want to connect to

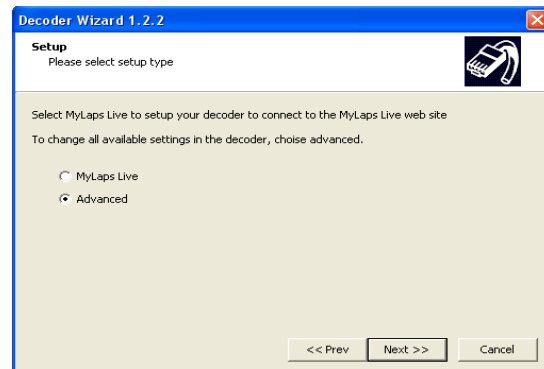




-Press 'Next'

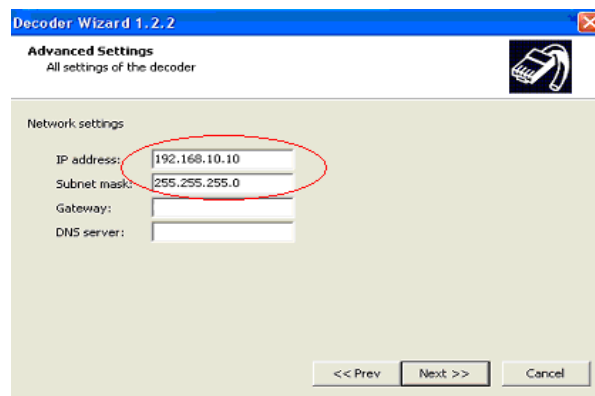
#### Step 4:

-Select 'Advanced'



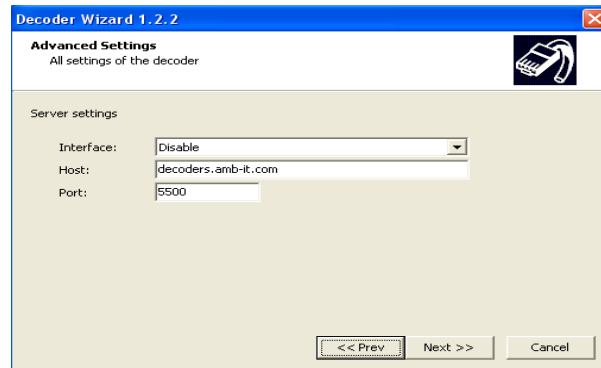
-Press 'Next'

Following screen shows the TCP/IP Settings of the decoder

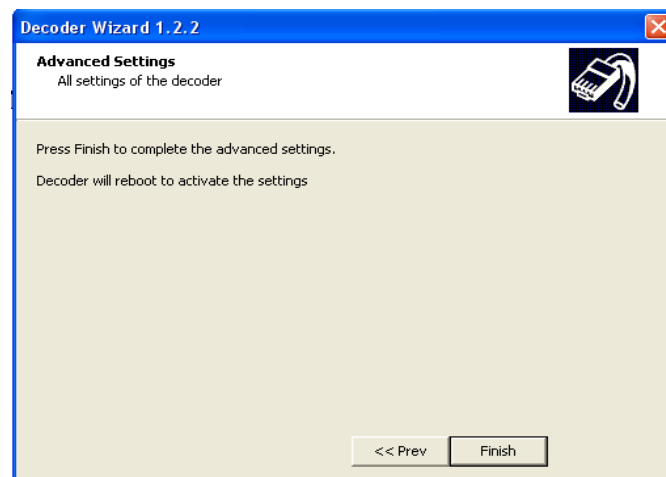


-Change the Settings by typing the new IP address

- Press "Next"



-Press "Next"



-Press "Next", the decoder will reboot and the new settings will be implemented